

# 3-D DISNEY CRUISE SHIP



## ASSEMBLY INSTRUCTIONS

Time to complete: Approximately 30 minutes

Level: Medium

### GETTING STARTED

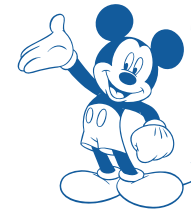
#### MATERIALS:

- Metal-edged ruler
- Butter knife
- Scissors or craft knife
- Cutting mat (optional)
- Multipurpose glue

- 1** Score all the pieces: Using a ruler as a guide, run the back side of a butter knife firmly along all dotted lines.



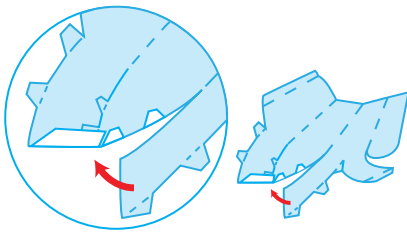
- 2** Using scissors or a craft knife and cutting mat, cut out all pieces along solid lines.



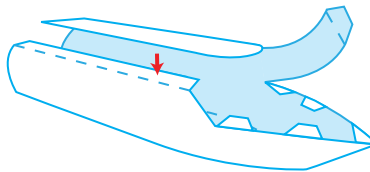
Hey Kids!  
Make sure to ask an adult for help.

### ASSEMBLE YOUR SHIP

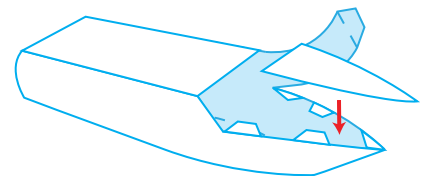
- 3** Fold sides of boat upward and glue tabs at the front of boat in place.



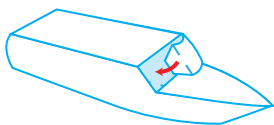
- 4** Fold top panel down and glue to tab.



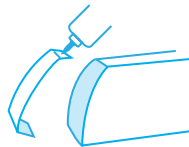
- 5** Glue deck piece onto front of boat.



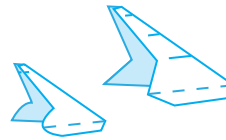
- 6** Fold front panel over to opposite side of boat and glue tab to inside of boat.



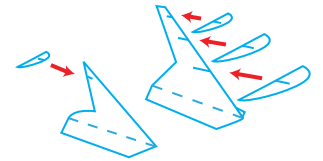
- 7** Apply glue to tabs on the back panel and affix to inside edges at end of boat.



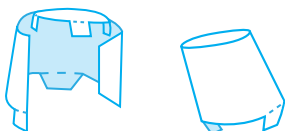
- 8** Fold front tower in half and glue together. Repeat with rear tower.



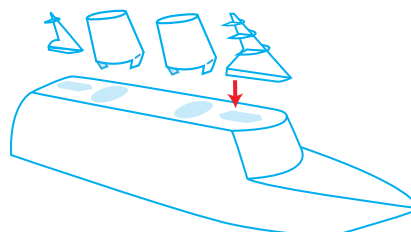
- 9** Insert front and rear tower wings into slits on each tower.



- 10** Wrap chimney panel around and glue ends together. Glue top tabs in place. Repeat with second chimney.



- 11** Apply glue to bottom tabs on chimneys and towers, and affix to top of boat.



- 12** You're done!

